

SINK SPECIFICATIONS

MODEL: 50/50 Regular Divide

White: WG200EQPROWH

Taupe: WG200EQPROTP

Asphalt: WG200EQPROAS

Black: WG200EQPROBL

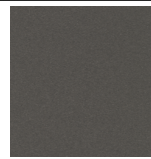
Midnight: WG200EQPROMN



White



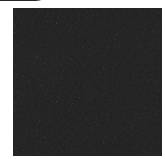
Taupe



Asphalt



Black



Midnight

*Optional Mounting Clips Available

FEATURES:

- * Premium Finish with a Silky-Smooth Feel
- * Made to Last, Extremely Durable
- * Impact Resistant, Tough Material
- * Odor Free
- * Dirt Repellent Effect
- * Fade Resistant
- * Heat Resistant, up to 356 degrees Fahrenheit
- * Easy to Clean

NOMINAL DIMENSIONS

Model WG200EQPROMN shown

OVERALL	BOWL DEPTH
33"x 19"	10"

